



ST. GREGORY THE GREAT CATHOLIC CHURCH

Founded in 1862

www.stgregorychurch.org • parishoffice@stgregorychurch.org • 785.562.3302

Our Lord Jesus Christ, Kind of the Universe

November 24, 2019

SOLEMNITY OF OUR LORD JESUS CHRIST, KING OF THE UNIVERSE

The Solemnity of Our Lord Jesus Christ, King of the Universe, formerly referred to as "Christ the King," was established by Pope Pius XI in 1925 as an antidote to secularism, a way of life which leaves God out of man's thinking and living and organizes his life as if God did not exist. The feast is intended to proclaim in a striking and effective manner Christ's royalty over individuals, families, society, governments, and nations.

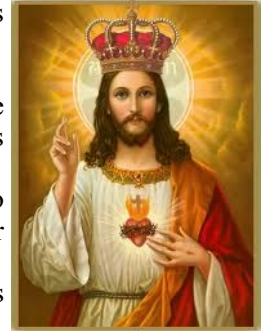
Today's Mass establishes the titles for Christ's royalty over men:

- 1) Christ is God, the Creator of the universe and hence wields a supreme power over all things; "All things were created by Him."
- 2) Christ is our Redeemer, He purchased us by His precious Blood, and made us His property and possession.

- 3) Christ is Head of the Church, "holding in all things the primacy."
- 4) God bestowed upon Christ the nations of the world as His special possession and dominion.

Today's Mass also describes the qualities of Christ's kingdom. This kingdom is:

- 1) supreme, extending not only to all people but also to their princes and kings;
- 2) universal, extending to all nations and to all places;
- 3) eternal, for "The Lord shall sit a King forever;"
- 4) spiritual, Christ's "kingdom is not of this world."



CatholicCulture.org

ADVENT PENANCE SERVICES

December 1

3:00pm Axtell
3:00pm Corning
6:00pm Kelly
6:00pm Wetmore

December 8

3:00pm Frankfort
3:00pm Baileyville

December 15

3:00pm Seneca
6:00pm Sabetha
6:00pm St. Benedict

December 22

3:00pm Marysville

PARISH NEWS

Pizza Hut Fundraiser Night

This Monday night is the Pizza Hut "Fun"draiser from 4:00pm to close. On this night only, the Marysville Pizza Hut will donate 15% of all purchases, including dine in, carry out or delivery, to the St. Gregory Catholic School PTO. Come support our school and enjoy a night off from cooking.

Special Invitation

Only 1 week remains for you to make a donation and receive your invitation to an unforgettable evening. All commodity or other financial donations to the **building fund** in excess of \$2,500 by Dec. 1 will be invited to a **special supper with Fr. Nathan** on Friday, Dec. 6th. Don't miss out on this fun and exciting opportunity to spend an evening with Fr. Nathan and other parishioners.

Thanksgiving Food Drive

Please fill the boxes that are located in the gathering space of the church with your non-perishable food items during the month of November. All food goes to the local Food Pantry to feed the hungry citizens of Marshall County. Sponsored by the Knights of Columbus.

Altar Society Christmas Party

All ladies of the parish are invited to attend our Christmas Party on December 2nd in the Parish Hall. We will start at 5:30pm with a short meeting and then start the party at 6:00pm. We will be providing soup and heavy hors d'oeuvres. There will also be some games. It will be a great time, and a chance for the officers to thank you for all the hard work you put in throughout the year.

PTO Cookie/Candy Sale

The St. Gregory PTO Annual Cookie/Candy Sale will take place in the Parish Hall on Saturday, December 7th from 9am-7pm and on Sunday, December 2nd from 8am-noon. Be sure to stop by and pick out your favorite cookies and candies to enjoy throughout the holiday season.

Thanksgiving Blessing of Bread and Wine

Please join us on Thanksgiving Day morning at 7:30am for the annual Thanksgiving Day Mass. Bring the bread and wine you will use for your Thanksgiving meal and place it in front of the altar. As part of the Mass, Father will say a special blessing over the bread and wine that is present.

MASS SCHEDULE AND INTENTIONS

Tuesday, Nov. 26

8:15am

No Mass

Wednesday, Nov. 27

12:05pm

No Mass

Thursday, Nov. 28

7:30am

~Happy Thanksgiving~

+Clarence Cohorst

+Francis Wacek

Mass at Beattie

8:45am

Friday, Nov. 29

8:15am

+Gerald Wassenberg

Saturday, Nov. 30

5:30pm

+Jim Schramm

Sunday, Dec. 1

7:00am

+Kenny Sells

St. Gregory and St. Malachy
Parishioners

+Roger Ring

+Buena Ellenbecker

10:30am

CALENDAR OF EVENTS

Sunday, Nov. 24

8:30am

Bible Study, Parish Hall

Monday, Nov. 25

4:00pm-Close

Pizza Hut Fundraiser for School

Wednesday, Nov. 27

Thanksgiving Break — No School

7:00pm

Bible Study, Parish Hall

Thursday, Nov. 28

Thanksgiving Break — No School

4:00-8:00pm

Community Thanksgiving Supper,
American Legion

Friday, Nov. 29

Thanksgiving Break — No School

9:00am-12:00pm

No Adoration

Saturday, Nov. 30

4:30-5:15pm

Confessions

Sunday, Dec. 1

8:30am

Bible Study, Parish Hall

6:00-7:30pm

Confirmation Class

BUILDING PROJECT UPDATE

Loan Balance (as of 11/14/19) \$829,631.50

Estimated Outstanding Expenses \$278,408.05***Total Parish Liability \$1,108,039.55***

Total Contributions to Date \$7,297,794.94

Donations (since 11/14/19) \$5,074.82

We have changed the way we will show the weekly financial update on the building project to highlight the tremendous generosity we've seen already and how much we need to pay off the project. The donations we receive each week will be used to make a loan payment at the end of each month. The interest rate on the loan is currently 4%. There are a few bills we have not received yet for the project which account for the outstanding expenses we still have.

PASTORAL VISIT FROM ARCHBISHOP

Archbishop Naumann will be making a pastoral visit to our parishes on December 8th. A pastoral visit is an opportunity for the Archbishop to celebrate Mass with the parish community and visit with parishioners to hear of the many successes and challenges they encounter in the parish. He will celebrate the 10:30am Mass and then celebrate the Sacrament of Confirmation at a 3:00pm Mass. Please join us at one of these Masses in welcoming the Archbishop!

LITTLE BLUE BOOKS

The Little Blue Book for the Advent and Christmas Season contains six-minute daily reflections on the Sunday Gospels. They are available in the gathering space for all to enjoy.

LIVE NATIVITY VOLUNTEERS NEEDED

Volunteers are needed to help with the Live Nativity on December 7th in the Koester block. We are looking for people who may be interested in portraying the characters. For more information, please contact Butch Schmitz at 562-2902 (home) or 713-0559 (cell).

POSITION AVAILABLE

St. Gregory Catholic School is seeking a school counselor who holds a current Kansas license through the appropriate accrediting agency. Main job responsibilities include, but are not limited to, counseling groups and individual students with problems, provide responsive services to address concerns as they arise, participate in team meetings and student problem solving, and consult with parents and teachers as needed, all with fidelity to church teachings. The full job description can be found on the school website <https://www.stgregorychurch.org/st-gregory-catholic-school>. Interested applicants can e-mail Karen Farrell at kfarrell@stgregorychurch.org or call the school office at 562-2831.

AREA EVENTS

November 24 St. Peter & Paul Catholic School PTO Annual Soup Supper, Seneca KS. Serving chili, chicken noodle, and vegetable beef soups, sandwiches, hotdogs, chili dogs, pies and desserts beginning at 4:30pm in Parish Hall. Free will donation and chance drawings for prizes.

December 8, 9, 10 Rosary On The Road. Sacred Heart Parish in Sabetha is hosting a 3-day Regional Parish Mission with speakers from the Holy Family School of Faith. Visit <https://www.schooloffaith.com/rosaryontheroad> for more information.

WEEKLY OFFERTORY COLLECTION

Envelope & Plate for November 17th \$7,890.25

(\$11,254 Expected average collection needed each week)

—Please remember the church in your will or trust—



ST. GREGORY THE GREAT CATHOLIC SCHOOL

#iGive Catholic Giving Day St. Gregory has provided Catholic education for children in Marysville and the surrounding communities since 1881. We need your support to continue our mission to educate each child as a unique Masterpiece of God. Support our school by participating in #iGiveCatholic on Giving Tuesday, Dec. 3rd. You can support the #iGiveCatholic initiative and give to St. Gregory Catholic School by visiting iGiveCatholic.org, select the Archdiocese of Kansas City, KS under "Browse Arch/Dioceses," and search for St. Gregory Catholic School. All donations made will come directly to our school. Why participate? We have 136 reasons why! Each and every one of our students!!

Upcoming Events:

To celebrate the beginning of Advent and the true meaning of the Christmas season, St. Gregory School will be hosting an **Advent Family Night** on December 3rd from 5:00 - 6:30 pm at the Parish Hall, sponsored by the school PTO. The night will include three come-and-go stations including a meal, a family craft, and family adoration. **We hope to see all of you here that night for Food, Fellowship, Fun, and a Focus on our Faith!!**

Christmas Program to showcase our talented students will be on December 18th at 10:00am and 7:00pm. Fun music and an always entertaining play will highlight the event.

CELEBRATE

BIRTHDAYS

Nov. 25	Margaret Huffman, Morgan Ruhkamp, Kara Bogdan
Nov. 26	Riley Armstrong, Aaron Koch, Marian Friedrichs
Nov. 27	Rashele Brown
Nov. 28	Matt Claeys, Braxton Miller, Derrick Roudybush
Nov. 29	Fred Lienemann, Dave Lyhane, Martina Ruhkamp
Nov. 30	Kerry White, Grant Haeefe, Kenzie Wassenberg, Vicki Brockman
Dec. 1	Chelsea Baker

ANNIVERSARIES

Nov. 25	Joe and Patty Germer
Nov. 27	Greg and Debbie Price
Nov. 28	Jim and Sharon Chaulk
Nov. 29	Troy and Jen Sedlacek
Nov. 30	Jim and Melissa Borgerding

THOUGHT OF THE DAY

Beginning to pray even before we completely understand prayer is the best way to learn, because actually praying is more important than acquiring abstract knowledge about prayers by merely reading about it. No one learns to swim by sitting by the side of a pool and talking about swimming or watching others swim. *(Dan Burke, Into the Deep)*



Please pray for Linda Mitchell, Rick Ham, Mallory LeSage, Lori Stohs, Liz Arth, Evelyn Anderson, Mike Watters, Doug Ryan, Betty Melcher, Steven Appel, Tony Evans, Karen Palazzola, Shane Molton, Teresa Reiling, Bruce Leonard, Doug Wende, Breckyn File, Melody Germann, Brittany Pappada, Mary Landoll, Scotty Hudson, Fr. Jim Shaughnessy, Dolores Wassenberg, Jim Nordhus, Don Cudney, Tori Dettke, Margaret Schotte, Kristi Meyer, Scott Throm, Joel Rivera, Janet Holle, Bill Mullins, Parker Price, Jolene Fisher, Jessie Sawin, Christen Hatzenbuehler, Janet Kirkland, Torey Butler, Mary Feldhausen, Boston Bieler, Hubert Faulkner, Hudson Gartner, Rosie Brinker, Raymond Throm, Debra Nietfeld Lambert, Mary Ann Lehman, Keith & Teresa Peeks, James & Jessa Sublette, Annette Pacha Smith, Bill Brinker, Joan Wacek, Rick Weigel, Barry Baber, Jordan Mackey, Wayne Price, Angie Miller, Bill Schwindamann, Scott Frerking, Wayne Kruse, Dorothy Peschel, Andy Kwapnioski, Larry Wissmann, Jane Frangel Williamson, Grace Koelzer, Libby Muchow, Jennifer McKeen, Leah Wassenberg, Walt & Charlotte Zimmerling, Tom Nolte, Margaret Stoehr, Francis Kloecker, Sandy Schmitz, Martha Meier, Marty Clark, Emily Larson, Debbie Jueneman and Jim Davis.

To make changes to the prayer chain, call Margaret Huffman at 785-713-9653 or the Parish Office.

CONTACTS

CHURCH: 1310 Carolina St. Marysville, Ks 66508 • **OFFICE:** 207 N. 14th St., Marysville, Ks 66508
OFFICE: 785.562.3302 • **HALL:** 785.562.2711 • **SCHOOL:** 785.562.2831 • **FAX:** 785.562.4039 • **RECTORY:** 785.562.2989

Fr. Nathan Haverland, Pastor
fnathan@stgregorychurch.org

Tracy Vering, Parish Secretary
parishoffice@stgregorychurch.org

Brenda Staggenborg,
Bookkeeper/Technology Coordinator
bstaggenborg@stgregorychurch.org

Facilities Manager
maintenance@stgregorychurch.org

Paula Landoll-Smith, Music Ministry
Paula.Landoll@Landoll.com

Jessica Miller, Ministry Scheduler
ministry@stgregorychurch.org
Allyson Lauer, School of Religion
allysonlauer@yahoo.com

SCHOOL
Karen Farrell, Principal
kfarrell@stgregorychurch.org
Susan Dressman, School Secretary
sdressman@stgregorychurch.org

COUNCIL CHAIRS

Parish Council: Sandy Schmitz
Finance Council: Chad Kramer
Cemetery: Frank Staggenborg at 562-8047

Parish Hall Reservations: Contact Parish Office
K of C Hall Reservations: Joe Peschel at 562-3161
Baptisms: See website for information
Weddings: Contact Father Nathan

If someone is in need of the Eucharist taken to them, please call the Parish Office.



Marysville 785-562-5334

785-562-5381
www.landoll.com



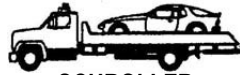
QUALITY PRODUCTS
QUALITY EMPLOYMENT
QUALITY OF LIFE

NOW HIRING
AAP/EOE



800 Center
800 Broadway
785-562-2186
Marysville, Kansas
www.csmaryville.com

Donald Prell
Realty & Auction
Marysville, KS
(785) 799-3787
Cell (785) 562-6787
FARM, RESIDENTIAL &
COMMERCIAL



SCHROLLER
COLLISION CENTER

24 Hour Wrecker Service
785-562-3546
Marysville, Kansas
"When you Roller, Send for Schroller"

United
Bank & Trust
Member FDIC

823 Broadway
Marysville, KS 66508
785-562-2333
www.ubankonline.com



MARSHALL
COUNTY
REALTY
562-3788

Jeff & Jane Sandstrom
Selling Real Estate Since 1981
712 Broadway, Marysville
marshallcountyrealty.com

MILLER ELECTRIC

Kevin Miller
785-562-6304

Commercial/Residential

Electrical/Trenching



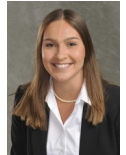
Gina Miller Piano Studios
Piano Lessons
Former Concert Pianist & Organist CAGO
References Provided
785-541-0478



Edward Jones
MAKING SENSE OF INVESTING

910 Broadway
Marysville, KS 66508
785-562-5533

Kate Manley, AAMS®
Financial Advisor



Liz Manley
Financial Advisor



Home, Kansas

785-799-3132

www.cornerstonegranitememorials.com



913 Broadway

785-562-5544



1152 Pony Express Hwy.
Marysville, KS 66508
785-562-2377
www.kanequip.com



Nordhus Motor



785-562-2383



785-562-2136
Marvin Kramer
Auto • Home • Farm
Life • Annuities

Fine Wines, Spirits & Ice Cold Beer
785-562-9994



200 N. 12th Street
Marysville, KS 66508



marketing • branding • design

Michelle Whitesell
jmwhitesell32@gmail.com | 562.6567

Frank's Jewelry Repair
821 Center Street
(across from the Astro Theatre)

Monday 4-7 p.m.
Free Ring Cleaning

Frank Staggenborg
785-562-8047

"90 Years of Serving the Community"



Josh & Krystal Trimble, Owners

Free In-Home Consultations

www.quality-monuments.com



- Boots & Work Wear
- Women's Fashion
- Tuxedo Rental
- Dry Cleaning



VALLEY VET SUPPLY
valleyvet.com

- Livestock Animal Health
- Equine Tack
- Chutes & Equipment
- Pet Supplies

Store Hours: Mon.-Fri. 8-8 Sat. 8-6 Sun. 12:30-5

Custom Metal Signs
www.nordhusfab.com

NORDHUS
FABRICATION

785-562-2937



ADAM B. BRUNA, FICF
FIELD AGENT
KNIGHTS OF COLUMBUS



Life & Disability Insurance
Retirement Annuities
Long Term Care

2506 Sunset Drive • Belleville, Kansas 66935
Phone: 785-562-8913 • adam.bruna@kofc.org

Independent Financial and Insurance Solutions



RYAN SMITH
FINANCIAL SERVICES

RYAN SMITH, RFC®
Financial Life Planner
709 Broadway • Marysville, KS 66508
785-713-1521 • www.regalsecurities.com/rsmith/



1155 Pony Express Hwy. 36 • Marysville, KS
785-562-5588
www.marysvilleheritageinn.com/



LINDA'S INSURANCE AGENCY

Specializing in Multi-peril
and Crop Hail Insurance
Agent/Owner Linda Schmitz

1507 Broadway, Marysville, KS
Phone (785) 619-6135

linda.schmitz@bluevalley.net



MARYSVILLE, KS
785-562-2346
www.landmarkimp.com



Carpet & Tile Cleaning
Spray Foam Insulation

Skyler Price
785-713-1968



KRAMER OIL
EST. 1976
785-562-2466
www.krameroil.com

Reflections

For all your religious needs
FIRST COMMUNION • CONFIRMATION
BAPTISM • SYMPATHY

785-562-3919

